



THE ACE REPORT

www.theaceproject.org

(888) ACE-1426

Summer 2016



Inside This Issue

Nogales Project Dedicated	2
ACE Visits Capitol Hill	6
Progress on Trench Project	8
Connector Road Opens at Puente	10
Fairway Utility Work Continues	11
Fullerton Road Ready to Begin	12
ACE Receives Award	13
ACE in the Community	14

ACE Board Members

Jack Hadjinian
Chair
City of Montebello

Juli Costanzo
Vice Chair
City of San Gabriel

Michael Antonovich
Los Angeles County

Don Knabe
Los Angeles County

Hilda L. Solis
Los Angeles County

Barbara Messina
SGVCOG

Victoria Martinez
City of El Monte

Mark Radecki
City of Industry

Elliott Rothman
City of Pomona

ACE Board Chair's Message



Dear Friends:

Rail is generally a safe and efficient way to move people and goods through Southern California, helping to preserve both a quality of life we cherish and an industry we depend on. But while freight trains reduce the number of large trucks on our congested highways, they also can block traffic at crossings and result in collisions.

To resolve the community impacts arising from more frequent and longer freight trains on the transcontinental railroad routes in the San Gabriel Valley, the Alameda Corridor-East Construction Authority (ACE) has been charged with constructing grade separations, where the road goes under or over the railroad, at the most congested and hazardous crossings in the San Gabriel Valley, as well as safety improvements at the remaining crossings.

I am proud to report ACE has made significant progress. In June, ACE opened a ninth grade separation to traffic. Seven grade separations are in active construction, as well as a rail line relocation project to eliminate trains from two crossings. Other grade separations are in various stages of design, along with enhanced safety gate systems at multiple crossings. To date, safety improvements have been completed at 40 at-grade crossings.

With freight funding initiatives in place or under consideration at the local, state and federal levels, the prospects appear good for additional funding for the ACE projects. Without the ACE projects, vehicle-hours of delay at San Gabriel Valley rail crossings are projected to double or triple over the next decade as traffic increases and the number of freight trains nearly doubles to more than 125 per day. We will continue to work to deliver the ACE grade separation projects to improve mobility and safety while eliminating locomotive horn noise and reducing vehicle emissions in our region.

Sincerely,

The Honorable Jack Hadjinian
Chair, ACE Construction Authority Board of Directors
Councilman, City of Montebello

Officials Gather to Dedicate Nogales Street Underpass



Officials unveiled a plaque to dedicate the newly constructed Nogales Street grade separation project. Front row, from left: Industry City Manager Paul Philips, Industry Councilman Newell Ruggles, Industry Mayor & ACE Board Member Mark Radecki, Montebello Councilman & ACE Board Chair Jack Hadjinian, State Senator Bob Huff, Caltrans District 7 Deputy Director Gary Slater, Los Angeles County Supervisor Hilda Solis, Los Angeles County Supervisor & ACE Board Member Michael Antonovich, Duarte Councilman & Metro Director John Fasana. Back row, from left: Pomona Mayor & ACE Board Member Elliott Rothman, San Gabriel Councilwoman & ACE Board Vice Chair Juli Costanzo, U.S. Rep. Grace Napolitano, U.S. Rep. Judy Chu, El Monte Mayor Pro Tem & ACE Board Member Victoria Martinez and Federal Highway Administration Deputy Administrator David Kim.

Federal, state and local officials gathered on June 17 to mark the opening of a six-lane roadway underpass at a once-hazardous and congested railroad crossing on Nogales Street north of the Pomona (60) Freeway.

Located on the transcontinental Alameda Corridor-East (ACE) corridor – among the busiest freight rail lines in the nation – the Nogales Street crossing was a top priority for grade separation. During the decade before construction began in March 2014, 10 crossing collisions were recorded. The roadway carried more than 40,000 vehicles a day and was blocked by 49 trains a day, a number that is projected to increase to 91 trains per day by 2025.

See NOGALES, page 3



Officials aboard a Foothill Transit bus breaks through a banner in a ceremonial drive through of the new roadway underpass.



ACE Board Chair Jack Hadjinian, center, is presented with a commendation from Los Angeles County Supervisors Michael Antonovich and Hilda Solis at the dedication ceremony.

NOGALES, continued from page 2

“The Nogales Street project eliminates the potential for train-vehicle collisions, delays for emergency responders, locomotive horn noise and reduces emissions,” Montebello Councilman Jack Hadjinian, Chair of the ACE Construction Authority Board of Directors, said during the dedication ceremonies. “We appreciate the support of our partner agencies for providing the funds needed to complete this important project.”

The \$118.2 million project was completed using funding from California state transportation bonds, the Los Angeles County Metropolitan Transportation Authority, the federal government and contributions from the City of Industry and Union Pacific Railroad.

“The ACE grade separations to address the community impacts of goods movement

See NOGALES, page 4



Motorists utilize the new six-lane Nogales Street roadway underpass, eliminating what was once one of the most dangerous railroad crossings in the country.

NOGALES, continued from page 3

along transcontinental freight rail lines merit strong federal support,” said U.S. Rep. Grace Napolitano, California’s ranking member on the Transportation and Infrastructure Committee of the U.S. House of Representatives. “That is why I successfully advocated for the establishment of new national freight programs to provide \$2 billion a year to support projects like the ACE grade separations and have urged the U.S. Department of Transportation to award discretionary freight grant funds to ACE.”

“I strongly support the applications submitted by the ACE Construction Authority seeking federal freight funds,” said U.S. Rep. Judy Chu (CA-27th District). “New national programs established just this year will provide significant federal funding for freight projects to help our nation remain competitive in global markets while also supporting projects like the ACE grade separations to improve community safety and quality of life.”

The ACE Corridor carries about 60 percent of the containers that arrive at the San Pedro Bay ports – the busiest in the nation, handling more than 40 percent of our nation’s ocean-going container trade. In doing so, the corridor plays a critical role in the economic vitality and quality of life for Southern California. Goods movement and related industries represent one-third of all jobs and economic activity in the region.

“While trade provides economic benefits, we must also address the negative impacts caused by traffic congestion and collisions at our rail crossings. The Nogales Street project will help improve quality-of-life

See NOGALES, page 5



With Nogales Street re-opened to traffic, the two lane Charlie Road detour has been closed and demolished. The detour road and temporary railroad crossing west of Nogales Street between Gale Avenue and Railroad Street was constructed to provide motorists with local access during construction of the roadway underpass.

NOGALES, continued from page 4

and safety, and ease traffic congestion in Rowland Heights, while supporting a critical freight corridor,” said Los Angeles County Supervisor Don Knabe.

Said State Senator Bob Huff, Vice Chair of the San Gabriel Valley Legislative Caucus in Sacramento, “As founding Board Chairman of the ACE Construction Authority, I strongly support the ACE program. ACE is a success story for the San Gabriel Valley and has the united support of the region’s state representatives in Sacramento.”

“The goal with this project is to ensure the safe and efficient travel of goods and people in Southern California,” said Deputy Federal Highway Administrator David S. Kim. “We need more projects like this nationwide that balance the needs of local residents and the business community.”

“With international trade flourishing and rail projects being advanced at the Ports of Los Angeles and Long Beach, local communities will see a steady increase in freight trains along the rail mainlines in Los Angeles County,” said Los Angeles County Supervisor Hilda Solis. “The ACE grade separations are integral to Los Angeles County’s strategy to enhance safety, reduce local congestion and improve the efficiency of goods movement throughout the region.”

“The goal with this project is to ensure the safe and efficient travel of goods and people in Southern California. We need more projects like this nationwide that balance the needs of local residents and the business community.”

**- David S. Kim
FHWA Deputy Administrator**

“To improve mobility, air quality and safety, ACE continues to efficiently and effectively deliver vital grade separation projects like this one,” said Supervisor Michael D. Antonovich who serves on the ACE Board of Directors. “Dividing streets from tracks will result in safer crossings, pollution reduction, and improved travel times for our local residents and the entire region.”

“Los Angeles County Metro is a major funding contributor to the ACE grade separation program,” said Duarte Councilman John Fasana, First Vice Chair of the L.A. County Metro Board of Directors. “The success of the ACE program highlights the critical importance of LA County Metro’s voter-approved sales tax measures in delivering priority transportation improvement projects and programs in Los Angeles County.”

“The City of Industry places a high priority on providing the best quality infrastructure to sustain our vibrant business sector, an economic engine of the San Gabriel Valley. We are pleased to work closely with the ACE Construction Authority to deliver the ACE grade separations and associated roadway projects,” said ACE Board member and City of Industry Mayor Mark Radecki.

ACE Visits Capitol Hill



During the annual trip to Washington, D.C., ACE and SGVCOG Board Members and staff met with Members of Congress to discuss the ACE Project and SGVCOG transportation priorities. At left, Rep. Judy Chu, center, is joined by, from left, Covina Mayor Kevin Stapleton, ACE Board Member Victoria Martinez, ACE Board Chair Jack Hadjinian, SGVCOG President Gene Murabito, ACE Board Vice Chair Juli Costanzo and ACE CEO Mark Christoffels.



U.S. Senator Barbara Boxer is presented with a plaque from ACE, SGVCOG, Foothill Gold Line, Foothill Transit and the San Gabriel Valley Economic Partnership by ACE Board Member Victoria Martinez in recognition of the Senator's leadership and commitment to the legislative priorities of the San Gabriel Valley.

At right, Rep. Norma Torres (third from right), with from left, SGVCOG Executive Director Phil Hawkey, Covina Mayor Kevin Stapleton, SGVCOG President Gene Murabito, ACE Board Member Victoria Martinez and ACE CEO Mark Christoffels.



At left, ACE Board Chair Jack Hadjinian (second from left) and ACE staff meet with Rep. Linda Sanchez (center) to provide an update on the progress of the ACE Project and discuss funding opportunities.

At right, ACE and SGVCOG Board Members and staff attend a breakfast meeting with Rep. Adam Schiff (center) in the Members' Dining Room.



Trench Walls and Floor Nearly Complete at San Gabriel Trench



Above, a Union Pacific locomotive runs on the temporary railroad shoofly track, while workers continue preparing the concrete floor slab at the bottom of the trench.



At left, workers construct the 30 ft. deep trench walls and floor for the 2.2-mile San Gabriel Trench grade separation project.



Left, aerial view of the trench looking west at Mission Road. Bridges have been completed at all four railroad crossings including at Ramona Street and Mission Road. Similar bridges have also been constructed at Del Mar Avenue and San Gabriel Boulevard. Project completion is scheduled for Fall 2017.



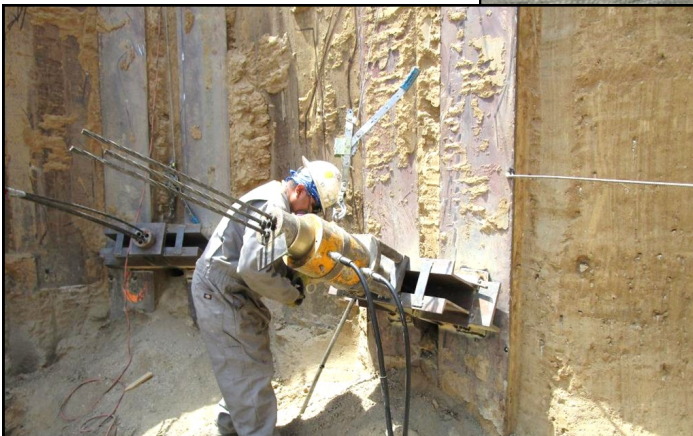
Below, aerial view of cast-in-drilled hole (CIDH) piles and columns being installed at the Union Pacific railroad bridge at the Alhambra Wash.

Connector Road Open to Traffic at Puente Avenue Project



At left, the newly constructed loop connector road west of Puente Avenue and south of Valley Boulevard is open to traffic to provide motorists with access between Workman Mill Road and Valley Boulevard which will be eliminated when Puente Avenue/Workman Mill Road is lowered for the four-lane roadway underpass and railroad bridge. The project in the City of Industry and unincorporated community of Avocado Heights is scheduled to open to traffic in Spring 2018.

At right, workers excavate and shore walls for construction of the pump station for the Puente Avenue project. This structure will remove stormwater accumulating in the roadway underpass during rainstorms.



At left, the tie-backs for the pump station retaining walls are being installed. When the Puente Avenue project is complete in Spring 2018, the roadway underpass will reduce traffic congestion, vehicle emissions, locomotive horn noise and eliminate crossing collisions, with five collisions recorded over the last 10 years.

Utility Work Continues at Fairway, Road Work to Begin



Crews have completed several storm drain and sewer relocations and made significant progress on the construction of the pump station for the Fairway Avenue project in the City of Industry and unincorporated community of Rowland Heights. At left, workers relocate and install a new sewer line along Walnut Drive as part of the infrastructure improvements associated with the project that will improve water, sewer, drainage, and electrical utilities. The next phase set to begin will include road work in preparation for underpass

construction that will require intermittent shifting of traffic lanes along Fairway Drive and Walnut Drive with temporary traffic lane closures and left turn restrictions. Access to local businesses on Fairway Drive, Walnut Drive and Business Parkway will be maintained. Motorists are encouraged to use Nogales Street or Lemon Avenue as a detour for northbound travel.



Lowering of the roadway will require the construction of a pump station to drain the stormwater from the underpass. At left, crews pour concrete for the top deck of the pump station.

At right, aggregate piers (stone columns) are being installed to prepare the soil and mitigate settlement in advance of construction of the railroad retaining walls and embankments. The Fairway Drive project is scheduled to open to traffic in Spring 2019.



Fullerton Road Project Ready for Construction

With the awarding of an \$82 million construction contract to Shimmick Construction Company by the ACE Board of Directors in March, major construction of the Fullerton Road grade separation project in the City of Industry and unincorporated community of Rowland Heights is scheduled to begin following a groundbreaking ceremony in September. Early underground utility relocation work has already commenced in preparation for the construction of a double-track railroad bridge over a six-lane depressed roadway underpass on Fullerton Road. Gale Avenue will be lowered to meet grade and a Railroad Street bridge will be constructed over Fullerton Road. A pedestrian bridge will be constructed immediately south of the railroad bridge to connect east and west Gale Avenue.



Above, an aerial rendering of the Fullerton Road grade separation project in the City of Industry and unincorporated community of Rowland Heights.

The Fullerton Road railroad crossing is traversed by more than 23,000 vehicles and 49 trains per day, projected to increase to more than 25,000 vehicles and 91 trains by 2025. The project will reduce emissions and eliminate traffic delays and crossing collisions, with two collisions recorded over a recent 10 year period.



Officials Tour ACE Projects

ACE and SGVCOG Board Members along with legislative and city staff participated in a recent tour of active and completed ACE projects. The tour offered a first-hand look at the construction sites to better understand what is involved in building a grade separation. Attendees included representatives from the offices of State Senator Ed Hernandez and Los Angeles County Supervisor Don Knabe and staff from the City of Montebello.

ACE Construction Authority Presented with Outstanding Organization Award



ACE Board Chair Jack Hadjinian (center) is joined by San Gabriel Valley Council of Governments President Gene Murabito and ACE Board Vice Chair Juli Costanzo.

The Alameda Corridor-East Construction Authority (ACE) was presented with the 2016 Outstanding Organization Award by a leading public administration society in acknowledgement of the agency's role in improving the quality of life in the region through its \$1.7 billion program of infrastructure improvements along the transcontinental rail lines in the San Gabriel Valley.

"While freight trains reduce the number of large trucks on our congested highways, they also block traffic at crossings – for more than two hours a day at some crossings – and can result in deadly crossing collisions. These impacts were and remain, quite frankly, unacceptable," said Montebello Councilman and ACE Board

Chairman Jack Hadjinian. Southern California is the nation's leading trade gateway and inland corridor.

Hadjinian accepted the Henry Reining Outstanding Organization Award on behalf of the agency at the annual awards luncheon in June of the Southern California Chapter of the America Society for Public Administration (ASPA). The award has been presented annually since 1964 and past recipients include numerous Southland cities, the League of California Cities, the Los Angeles Police Department, Habitat for Humanity LA, and other public and nonprofit organizations.

Established in 1998, ACE is charged with funding and constructing 20 rail-roadway grade separations, where the road goes under or over the railroad, at the most congested and hazardous crossings in the San Gabriel Valley, and safety improvements at the remaining at-grade crossings. More than \$1.65 billion in transportation grant funding has been secured for the ACE program and ACE recently opened its ninth grade separation to traffic. Seven grade separations are in active construction and another four grade separations are in design.

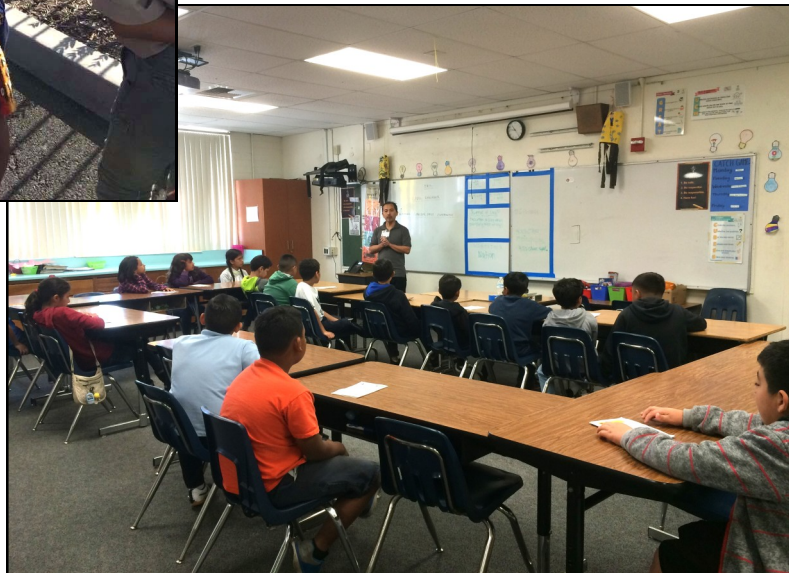
Others recognized at the ASPA luncheon include Los Angeles County Metro CEO Phil Washington (Tom Bradley Equal Opportunity Award); Glendale City Council (Winston Crouch Award for Innovation in Government); Los Angeles County Director of Personnel Lisa Garrett (Clarence A. Dykstra Award for Excellence in Government) and ACE Government and Community Relations Director Paul Hubler (Will Baughman Chapter Development Award).

ACE in the Community



ACE Senior Project Manager Charles Tsang speaks with cub scouts from Pack 722 – Walnut during a tour of the construction site at the Nogales Street grade separation project in the City of Industry and unincorporated community of Rowland Heights.

ACE Senior Project Manager Phillip Balmeo speaks to students about the different opportunities available in the field of engineering and construction during Career Day at Don Julian Elementary School in the unincorporated community of Avocado Heights.



We're multilingual! Read the Spanish and Chinese versions of our newsletter on the ACE website:

Somos multilingüe! Lea la versión en Español de nuestro boletín en la página de internet de ACE:

我們為您提供多語種服務！欲閱讀中文版本的通訊，請瀏覽ACE網站：

www.theaceproject.org